

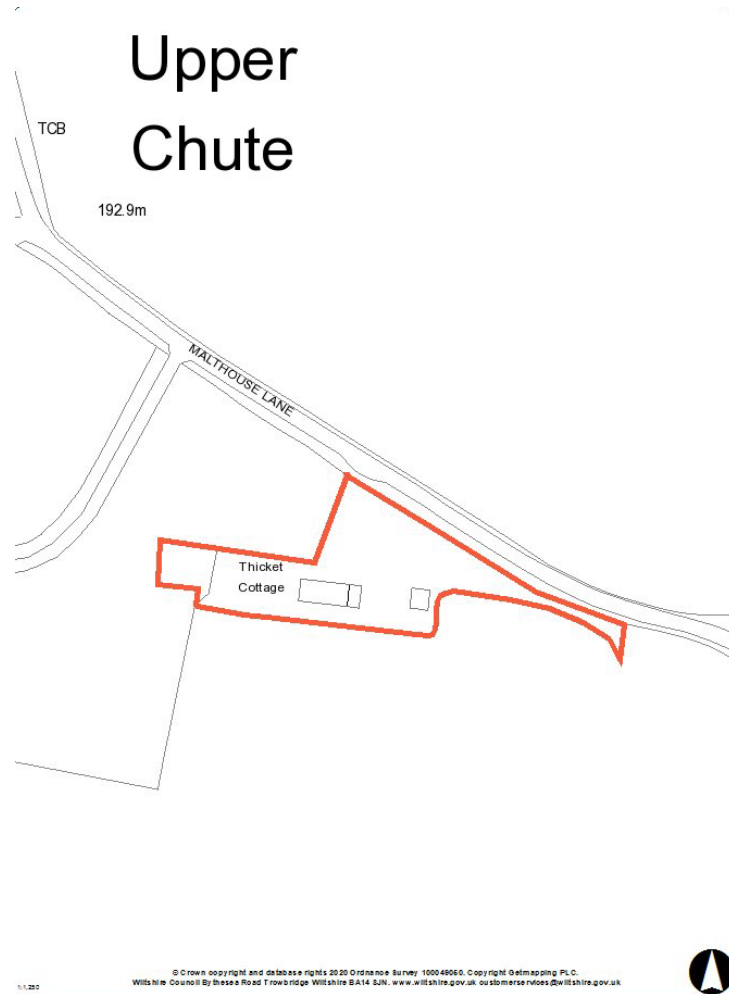
Eastern Area Planning Committee

15th October 2020

7a) 20/05329/VAR Thicket Cottage, Malthouse Lane, Upper Chute, SP11 9EG

Variation of conditions 2 and 5 of 20/01143/FUL to include the extension of the ground floor by 8m, and the formation of a rooftop terrace with external staircase

Recommendation: Approve with Conditions

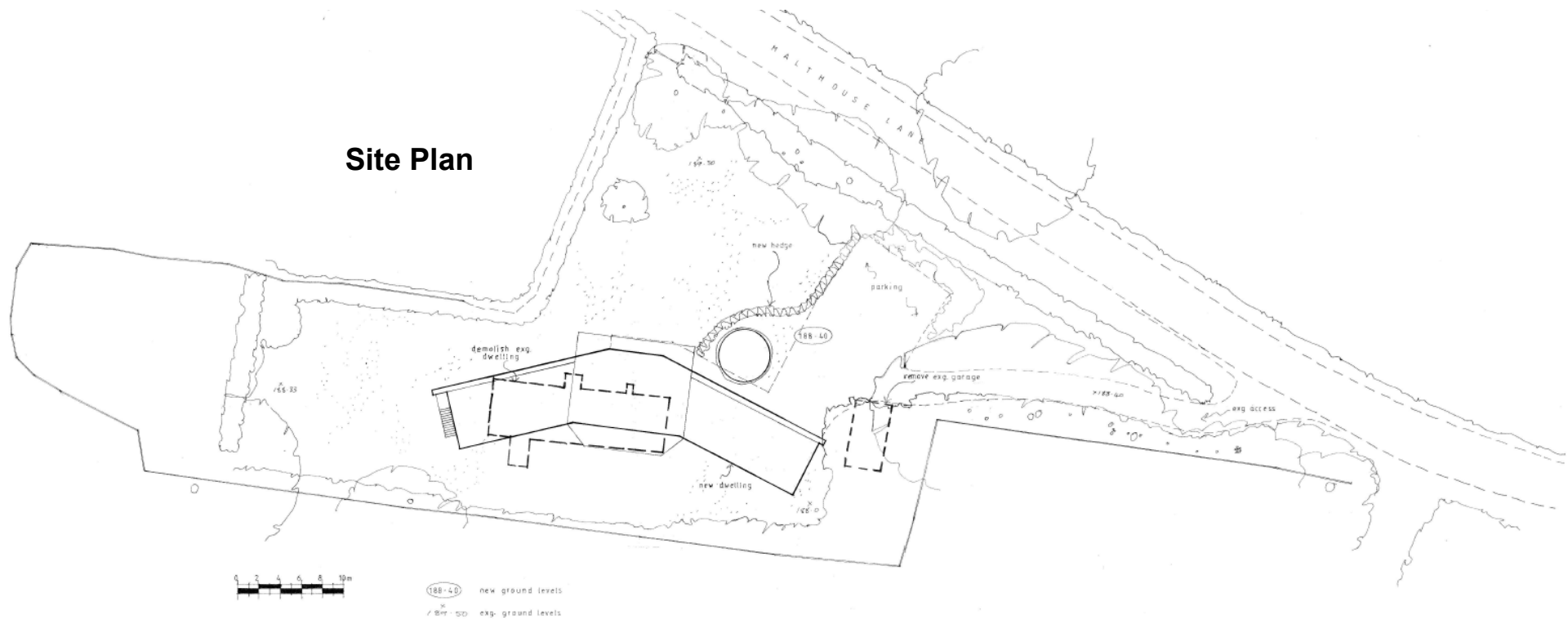


Site Location Plan



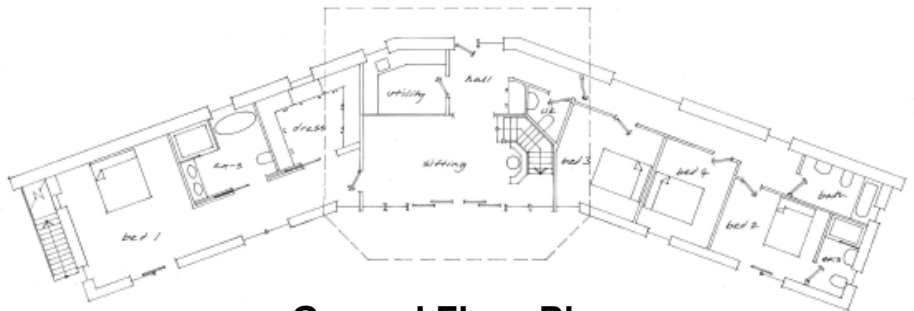
Aerial Photography

Site Plan



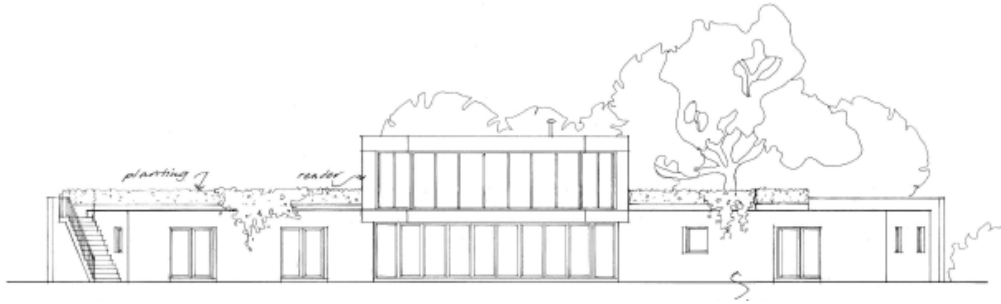
188-40 new ground levels
187-50 exg. ground levels

Ground Floor Plan

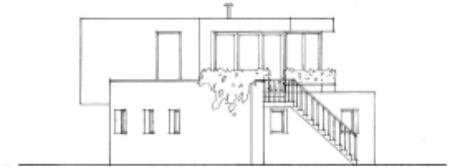


First Floor Plan

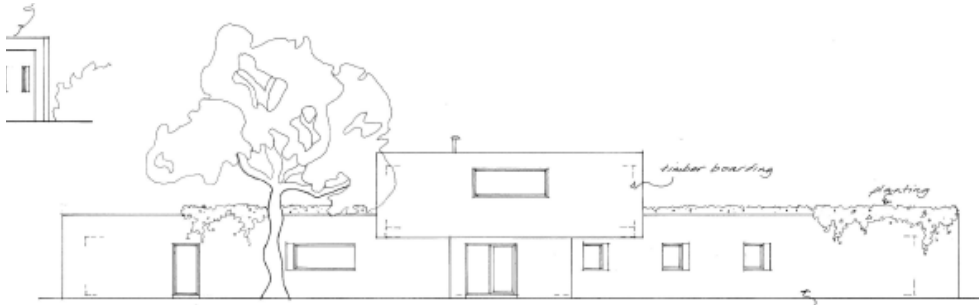




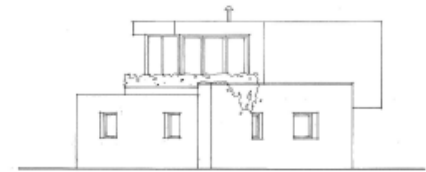
South Elevation



West Elevation

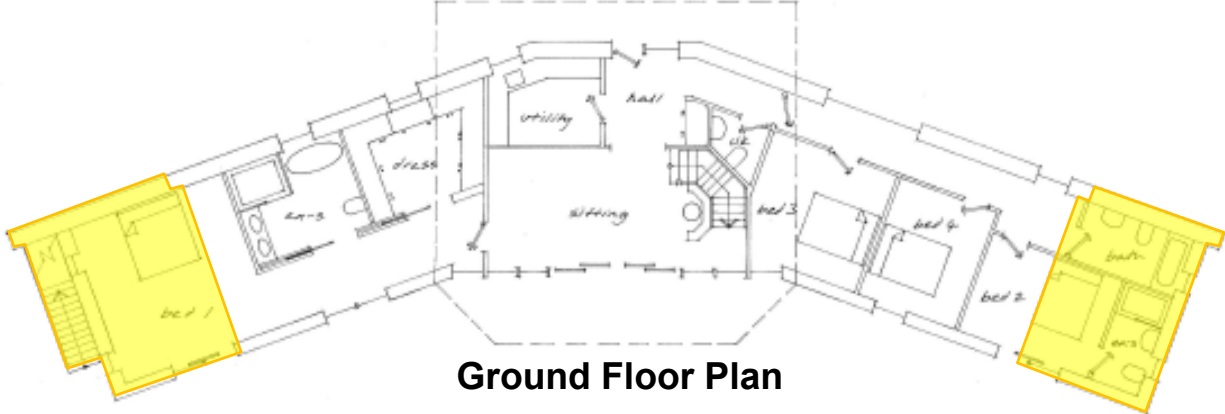


North Elevation

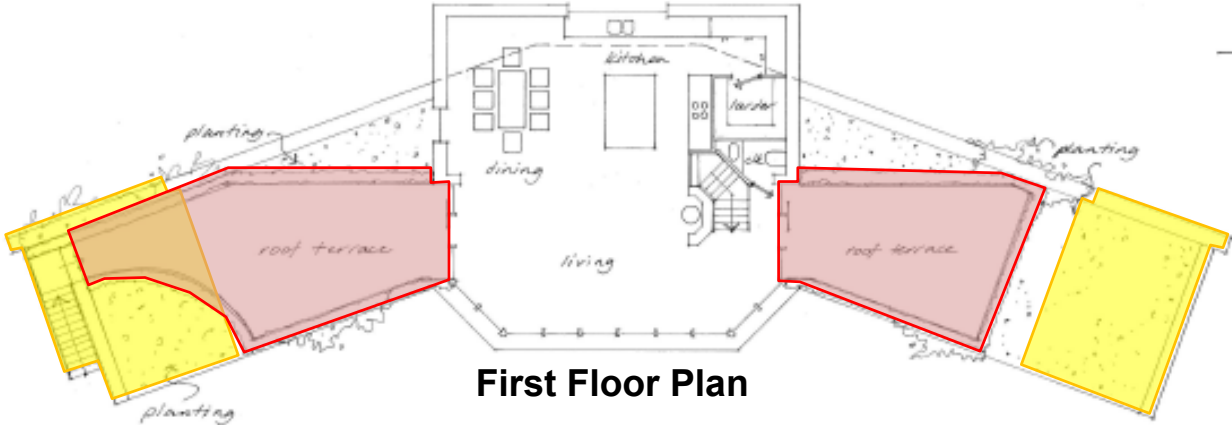


East Elevation

Comparison with approved scheme 20/01143/FUL



Ground Floor Plan

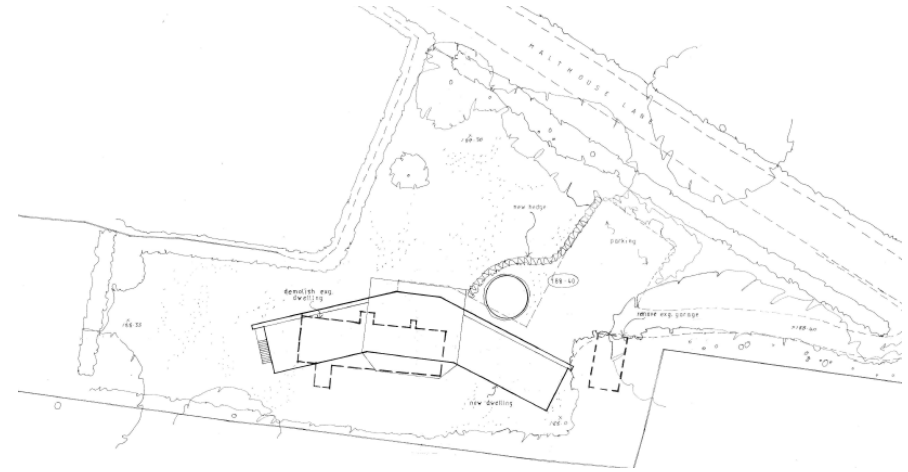
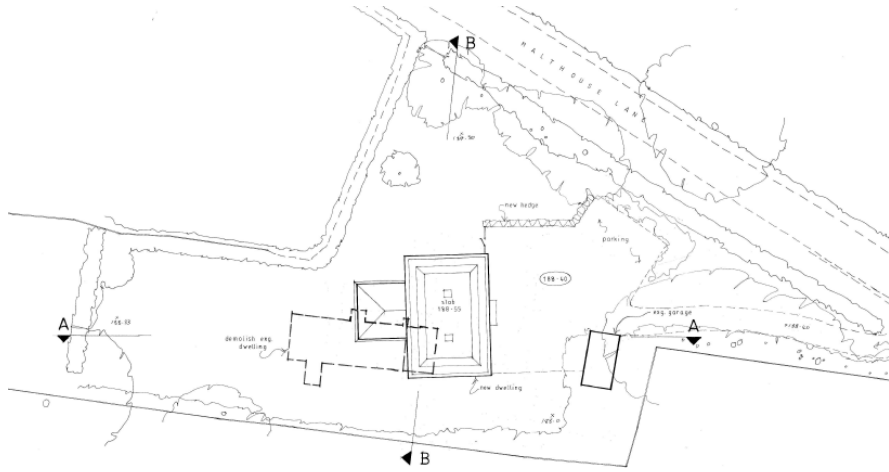


First Floor Plan



North Elevation

Comparison with approved (at appeal) scheme 19/06565/FUL



SOUTH ELEVATION



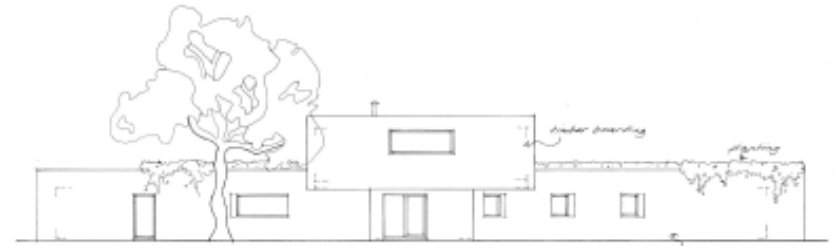
NORTH ELEVATION



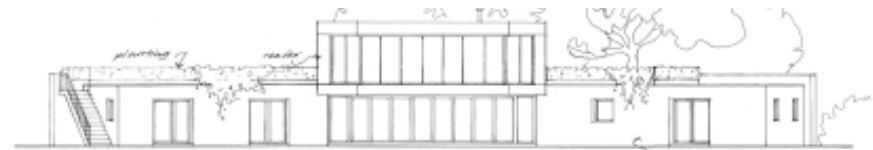
EAST ELEVATION



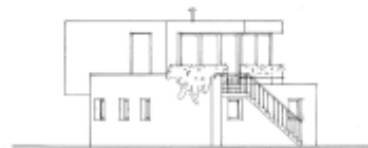
WEST ELEVATION



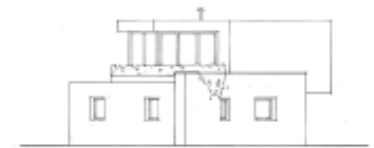
north elevation



south elevation



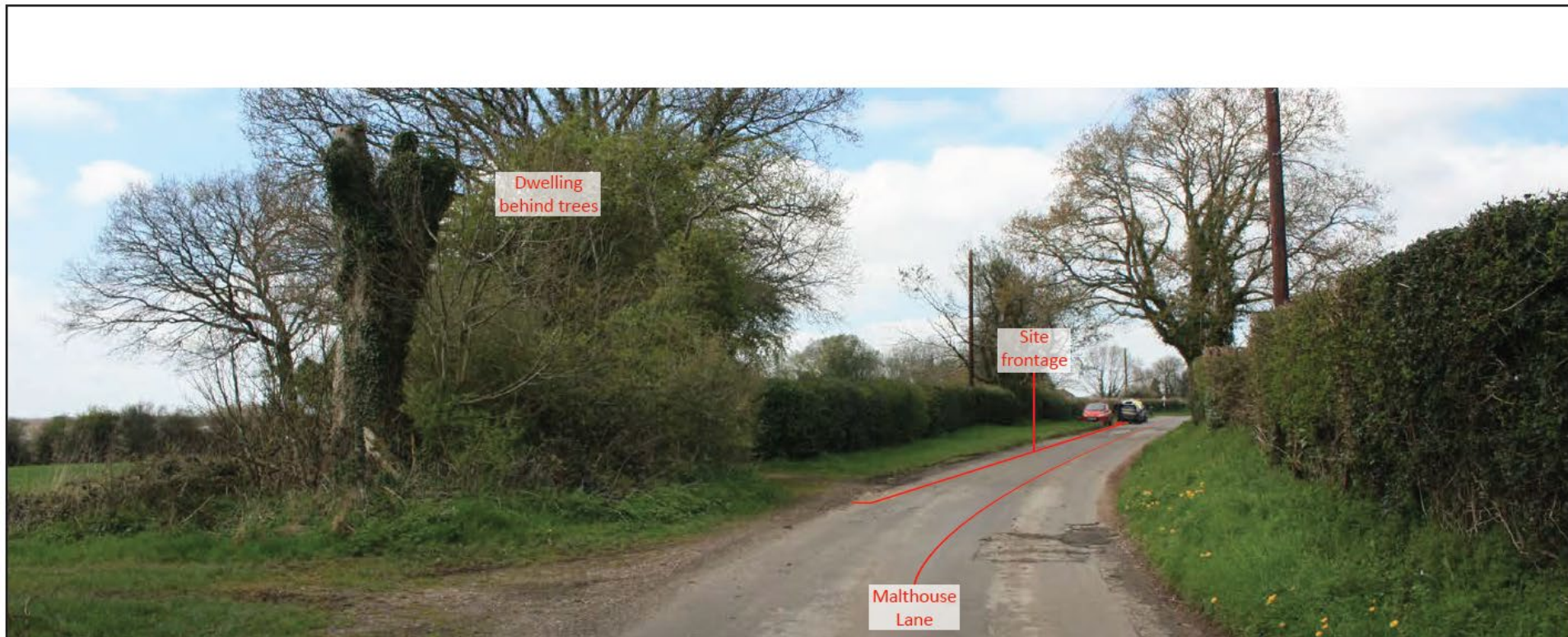
west elevation



east elevation

19/06565/FUL

20/05329/VAR



VP: 2

Viewpoint direction: West

Approximate distance from site: 50m

Taken by: WH

Photograph date: April 2019

OS map elevation: Between 185-190m AOD



VP: 10

Viewpoint direction: South-east

Approximate distance from site: 80m

Taken by: WH

Photograph date: December 2019

OS map elevation: Between 185-190m AOD



VP: 8

Viewpoint direction: North-west

Approximate distance from site: 1.04km

Taken by: WH

Photograph date: April 2019

OS map elevation: 145m AOD



VP: 6

Viewpoint direction: North-east

Approximate distance from site: 505m

Taken by: WH

Photograph date: April 2019

OS map elevation: Between 175-180m AOD



VP: 9

Viewpoint direction: South-west

Approximate distance from site: 515m

Taken by: WH

Photograph date: April 2019

OS map elevation: Between 200-205m AOD

Eastern Area Planning Committee

15th October 2020